



EVTAP[®] SMART

PV self-consumption optimization
and dynamic load management

🇬🇧 2023/2024

SYSTEM SOLUTION FOR EV-CHARGING



PV SELF-CONSUMPTION OPTIMIZATION

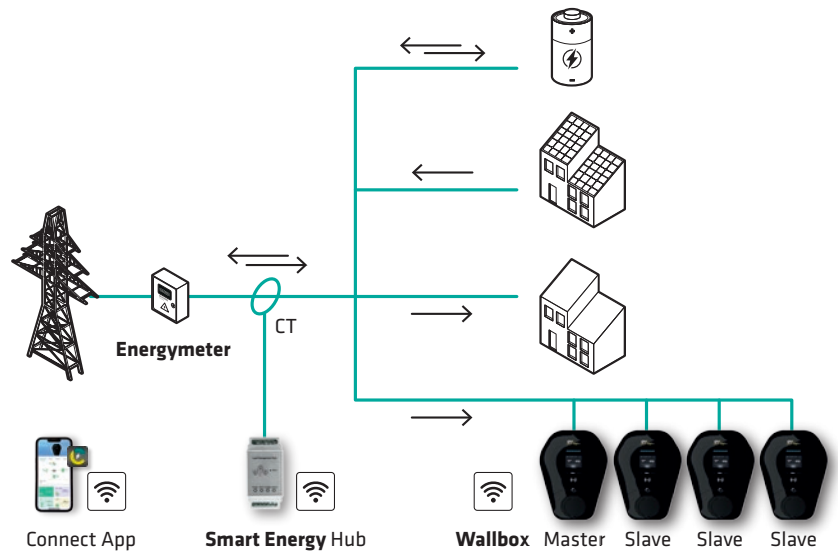
Integration of smart wall boxes from EVtap®

EVtap® wallboxes can charge electric vehicles with up to 100% solar power while optimizing self-consumption. In addition, EVtap® dynamically adjusts its charging power to the grid connection limits and the total power consumption of the devices - all thanks to the EVtap® Load Management Hub.



EVtap® Smart Energy Hub is used with the supplied current transformer clamps to measure current consumption and flow direction in real time. It tells the charging station the maximum current that should be made available for charging electric vehicles. The EVtap® Smart Energy Hub creates its own Wi-Fi access point, allowing for easy local configuration using a smartphone, tablet or PC. Compatible with EVtap® Smart Wallbox charging stations. RS485 connection also available.

With the Master & Slave mode, the flexible installation of additional charging points without investing in expanding the grid connection is a great option for companies and company fleets.



EVtap® Smart Products



Order.-No	
758138	EVtap® Smart Energy Hub



Order.-No	
753842	EVtap® Smart Wallbox 11/22kW



Order.-No	
758139	Measuring sensor CT100A
758140	Measuring sensor CT800A



EVtap® Connect App



Advantages in combination with Smart Energy Hub:

- Solar PV optimal use for cost-effective & environmentally friendly EV charging.
- Works with all PV systems (regardless of manufacturer)
- Dynamic load management of up to 252 EVtap® wall boxes
- Mains connection is never overloaded
- Expensive power peaks are avoided
- Master and slave mode for EV fleets and small businesses
- 3 intelligent charging modes:
1. Full Power 2. Solar Assist 3. Solar Only
- User-friendly Android and IOS app with intelligent and energy management functions
- OCPP 1.6 and OCPP 2.0.1 interface for remote monitoring